



**Prostate Cancer
Centre**

Annual Report 2021



ILIENCY



ADAPTABILITY

ADAPTABILITY

RESILIENCY

ETERMINATION

Reflecting on a year of
resiliency,
determination
& adaptability

to ensure the men in our community
impacted by prostate cancer
receive the life-saving care they require.

DAPTABILITY

ETERMINATION

ETERMINATION



RESILIENCY

Table of contents

5	BOARD CHAIR message
6	BOARD members
7	BOARD & LEADERSHIP farewell
9	OUR purpose
10	COVID-19
11	PROSTATE CANCER statistics
12	RESEARCH
18	VOLUNTEERS
22	DONORS
26	The AGAT FOUNDATION and KEEP IT IN ALBERTA campaign
28	Special THANK YOU
30	CHARITIES
32	DONOR wall
40	2021 FINANCIAL statements





HOPE

CARING
RESOURCES
RESILIENCE



CONNECTION
ADAPTABILITY
REACH

CHANGE



BOARD CHAIR message

Resiliency, determination, adaptability, and **change** have been the hallmarks for 2021 as we continue to support men's health and the outcomes for our patients and their families through multiple waves of COVID and through our search for new leadership.

I want to thank the Board, Leadership team, Staff and Volunteers who have continued to focus on making our patient outcomes better while supporting the creation of a new and expanded vision while also working toward the hiring of a new Executive Leader.

Through 2021 we were able to position the PCC through the following key achievements

- The hiring of a new CEO, **Jeff Davison**
- **The raising of new funds** that allow us to expand our operations.
- **The reorganization of PCC** to provide services more effectively through growth and improved patient experience and outcomes.
- **The expansion of our vision** that will include mental health, prehabilitation and personalized medicine.

Although 2021 has been a difficult transition year **we have shown great resiliency** and are better positioned to move forward to provide greater value to our patients in the years to come, and I want to thank all the people who have continued to contribute and support us through 2021.



Keith Steeves

Chairman of the Board, Prostate Cancer Centre





BOARD members

Keith Steeves

Board Chair

Retired NAL Resources

Andrew Abbott

Retired Tristone Capital

Dr. Kevin Carlson

Urologist

Nipa Chakravarti

Inter Pipelines Ltd.

Cody Clayton

Remington Development Corp.

Dr. Bryan Donnelly

Seaman Research Chair

Dr. John Dushinski

Urologist

Dr. Eric Hyndman

Section Chief of Urology

Rick Lancaster

Retired BluEra

John Piasta

Bennett Jones LLP

Dr. Shelley Spaner

Mayfair Diagnostics,
Women for Men's Health

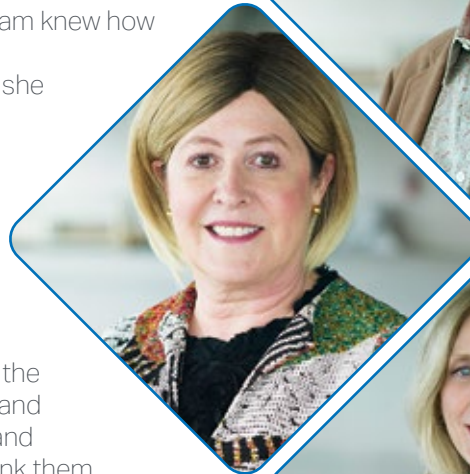
BOARD & LEADERSHIP

farewell

We want to acknowledge the extraordinary efforts and dedication of a member of our leadership team and board members who resigned from the Prostate Cancer Centre (PCC) during this year to pursue other interests.

An advocate for the patients, donors and her team, **Pam Heard** leaves a remarkable legacy during her tenure as the Centre's Executive Director for over 10 years. Pam arrived at the PCC just as the team was moving into the current space at the Rockyview General Hospital and with her leadership, grew the operations exponentially. Starting with a small team of eight people to serve all of Calgary, she leaves the centre with over 30 employees and countless volunteers. Pam knew how impactful it was to take the services directly to the men and during her time, she proudly oversaw the implementation of the rural outreach program and development of the second MAN VAN™. Her successes will help to shape the future for many years to come and we wish her all the best in her retirement.

We also sadly say goodbye and wish all the best to our **Board Chair Jon Truswell** and **Directors Bill Brooks, John DeSanti** and **Maryse C. St. Laurent**. We want to thank them for their incredible leadership, guidance and dedication to improving men's health. With over 20 years of combined experience with the PCC, their contributions and legacy will be forever remembered.





OUR purpose

OUR VISION

To have a healthy male population
free of advanced prostate cancer.

OUR VALUES

I.C.A.R.E

Integrity



Compassion

Accountability

Respect

Excellence

OUR MISSION

We fight prostate cancer
by delivering one-stop support to men and their
families through rapid access to personalized care,
research, and education.

We promote overall
health and well-being,
inspire hope, and reduce the impact of prostate
cancer in our community.



COVID-19

Throughout 2021, the pandemic continued to threaten the health and safety of our patients and staff, therefore we needed to demonstrate flexibility to utilize our resources. We pride ourselves on being able to say that PCC never had one day where we needed to close our clinics. This is due to the diligence of our staff and leadership through demonstrating adaptability and thoroughness. From early on in the pandemic, we implemented safety protocols such as increased frequency of disinfecting practices, spaced out patient appointments, continuous masking and virtual patient classes, to name a few. Work-from-home policies and hybrid working models also contributed to a reduced risk of transmission as we were able to greatly lessen the number of people at PCC every day, yet staff continued to show their resilience by performing their roles at home.

A special thank you to Camille Scheible

PCC's Patient Services Manager who has remained our COVID-19 response lead throughout the pandemic. Camille has put in several hours to implement and update all of our policies and procedures to ensure that PCC continues to be a safe place for staff and our vulnerable patients.



IMPACT OF COVID-19 TO PROSTATE CANCER CHECK PROGRAMS

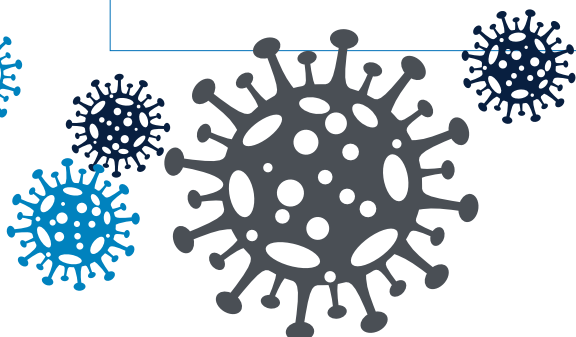
Interruptions in testing programs and diagnostic pathways as such caused by COVID-19, have lead to a reduction in diagnoses and will likely result

in a shift in some cancer cases to more advanced stages.

During COVID-19

14,000

PSA blood checks were missed by the
MAN VAN being off the road



PROSTATE CANCER statistics



1 in 6

Alberta men
will develop
**prostate
cancer**
in their lifetime
(compared to
1 in 9 nationally)

3rd leading
**cause of
death**
from cancer
in  men

Prostate Cancer is nearly

100%
TREATABLE
when detected early

2,700

new prostate cancer cases

+ + 450

direct deaths
in Alberta in the last year

1/5th 

Leading form of cancer
in Canadian men and
accounts for **1/5th** of all
new cancer in men

**PROSTATE
CANCER** is the
MOST
common cancer
among Canadian
 **MEN**



RESEARCH

The Prostate Cancer Centre attracts global clinical trials to bring cutting-edge pharmacology care local here to Alberta, offering access to life-saving drugs and science to our patients.

Without our research site, men in Southern Alberta would not have access to these new and potentially life-prolonging medications on top of their standard of care.

Many of our translational research studies, such as the Alberta Prostate Cancer Research Initiative (APCaRI), are finding ways to diagnose / predict cancer sooner, more accurately and by less invasive means than are currently available.

Clinical trials are carefully designed to have as few risks and as many benefits as possible for everyone who takes part.

The possible benefits of being in a clinical trial include:

- Receiving the best standard cancer treatment available, even if not receiving the new treatment. Patients are also being followed closely during and after the clinical trial.
- If the new drug being studied in a clinical trial works effectively to treat (or prevent) cancer, participating patients may be some of the first people to benefit from the treatment.
- Taking part in a clinical trial is a chance to help others and improve the treatment of cancer.

2021 CLINICAL Research Department Statistics

Ongoing clinical studies	18
Active Patients in Clinical Trials	*280
Research Patient Care Visits	510
Men receiving free genetic testing as part of clinical study or industry partnership in 2021	245

*51% increase in the number of patients enrolled in active trials from last year.

TOTAL NUMBER OF PATIENTS ENROLLED in the APCaRI program until 2021



Advancing Science and Research Globally





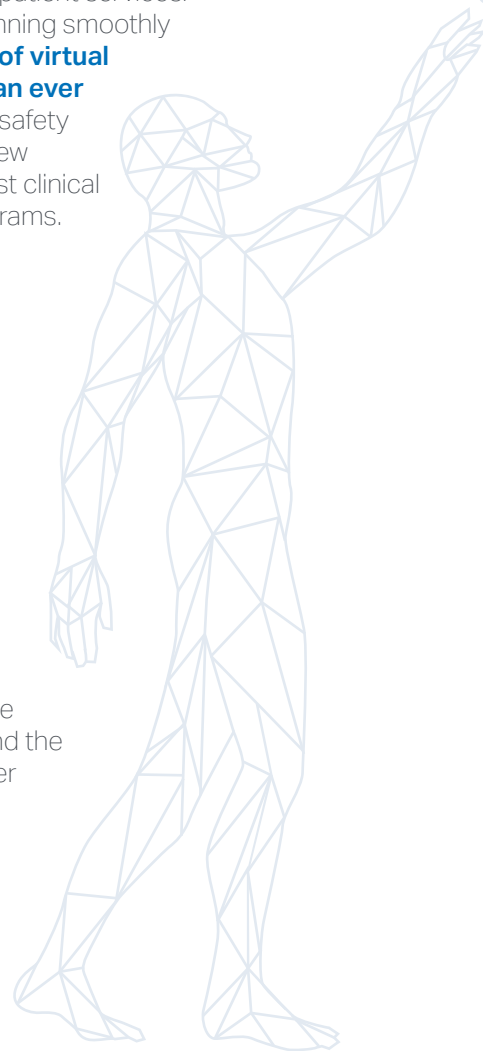
CENTRE OF EXCELLENCE in clinical care

The Clinical team has been working hard at providing innovative patient services. The team's strength and tenacity kept the centre's programs running smoothly whether it was in person or virtual patient care. **The adaptation of virtual care** allowed the Clinical team to **reach more rural patients than ever before**. The Clinical team continued to adhere by all health and safety guidelines to ensure a safe environment. The addition of three new clinical team members allowed the development of a more robust clinical model and allowed the team to further expand our support programs.

BONE HEALTH Optimization program

The Bone Health Optimization program, supports patients currently receiving treatment for metastatic prostate cancer. Patients receive education, bone mineral density testing, fracture risk assessment, medical consultation and GP recommendations. In 2021, the Prostate Cancer Centre was able **to open referrals to better support all Calgary Urologists** and the development of a clinical data registry was implemented to better support the patients.

The program has seen
368 patients to date.



MENTAL WELLNESS

pilot project

Since the COVID-19 Pandemic entered our world, we have been identifying needs and pivoting to be able to enhance services for our patients. During this time, we discovered a gap in care involving mental health and wellness services.

In 2021, we piloted a new program that **allowed us to assist patients through nursing assessments, post-operative wellness support groups, and 1:1 visits** with a psychologist. With the encouragement and need from patients, staff and volunteers, have continued to offer these services on a fulltime basis by developing a Nurse Navigator role.

As the Pandemic persisted, we noticed an increased feeling of anxiety in patients prior to receiving treatment due to the delays in healthcare access. We adapted and began to **offer a pre-treatment class called "Self care with cancer" where patients and their loved ones gain knowledge on resiliency and coping skills** prior to receiving cancer treatment. Closing out the year of 2021, we assisted **385 patients** through our mental wellness resources.

Mental Wellness Program Launch	Patients
Nurse Navigator and Wellness Surveys	362
Psychologist Consultations	13
Self Care with Cancer	10
	Total: 385

Patients seen
for clinical
services
over the
past 4 years

2021

9,334 patients
PCC adapted to
virtual care.

23% increase in patient
impact through clinical care
programs from last year.

2020

7,593 patients
Pandemic
PCC forced to cancel
some clinical
programs.

2019

7,932 patients

2018

7,058 patients

THE MAN VAN™

Due to the COVID-19 Pandemic, PCC's MAN VAN Program remained off the road in 2021. The team of drivers, clinical staff and volunteers remained passionate about the importance of mobile PSA blood testing and health measurements. The MAN VAN program reopened in June 2022, continuing right where we left off, providing education and awareness about the importance of early prostate cancer detection to the men in our communities.

Special Thank You to our **Partners of Excellence**

We want to thank Nutrien, Bayer and AGAT Laboratories for continuing their support of the MAN VAN program throughout the COVID-19 pandemic.

Nutrien™

AGAT

Laboratories





Sponsored By AGAT Labs Bayer Nutrien

THE MAN VAN™

The Drive To Eliminate Advanced Prostate Cancer

Free PSA Blood
Test Done Here!



Prostate Cancer
Centre

Have Your Baseline PSA Test Done Starting



VOLUNTEERS

JIM ENGLISH

An elevated PSA test in 2013 was Jim's first introduction to the Prostate Cancer Centre through the RAPID Access Clinic. When his biopsy came back positive for cancer, Jim attended the information session which gave him all of the information needed to understand his treatment options. Initially he presented at the low-risk stage, so Jim entered the Active Surveillance program and was monitored for two years.

Over time, Jim's cancer progressed to an intermediate risk level and the next stage of treatment was recommended. Given all of the options, Jim chose to have the surgery to remove his prostate. Following the procedure, Jim attended several of the PCC's support programs and was also monitored by the clinic's nursing team to ensure his recovery went as planned.

Jim is doing great! He is a graduate of the Prostate Cancer Centre and has been volunteering ever since. His time has been primarily spent in helping to facilitate the Treatment Options information session. When the sessions were in person Jim would help set up and would welcome the patients coming into the class. He was always there to chat and help calm the nerves of the many men walking through the door, who had just heard the dreaded words "you have cancer".

When the pandemic hit and classes were shifted to a virtual format, Jim jumped on board without hesitation. He picked up the online platform so that he could continue to offer his incredible support and be the face of hope for the men and their families facing the same stress and anxiety.

Thank you to all of our volunteers for their dedication and resilience!





A tribute to **BRIAN ANDERSON**

December 21, 2021 was a sad day for the Prostate Cancer Centre as we mourned the loss of an incredible man. Brian Anderson, one of our longest and most faithful volunteers, passed away. Brian had been diagnosed with prostate cancer in 2002 and after he had completed his treatment, he decided to join the Prostate Cancer Centre as a volunteer.

His smile combined with his calm demeanor was a great comfort to men anxiously awaiting a biopsy or cancer appointment. Brian knew that this was a difficult time for patients so he would take the time to answer questions and alleviate their fears to ensure men and their family members felt heard and comforted. Brian was not only donated his time at the clinic, but he also shared his many skills with the MAN VAN program.

Brian—you were more than a volunteer, you were family—you made a difference with how the patients navigated their illness, and very simply you made other volunteers and the staff at the Prostate Cancer Centre better. We will remember you with much appreciation. You have no idea how much you will be missed.

– Rest In Peace.

"I was determined that I wanted to help to raise awareness of Prostate Cancer so that other men would not be in the potential risk position I was personally in. The unknown can be a little scary and I try to alleviate that concern and stress. I am fortunate to be a Prostate Cancer Graduate and very proud to be part of the volunteer group at the Prostate Cancer Centre, we try to make a difference". - Brian Anderson, 2017





DONORS

The generosity of our donors and community partners ensures that we can continue to deliver the life-saving care needed for Alberta men facing prostate cancer.

2021 was an outstanding year with incredible support from our community and philanthropic leaders.

Featured MAJOR DONORS

Rance & Marilyn Fisher

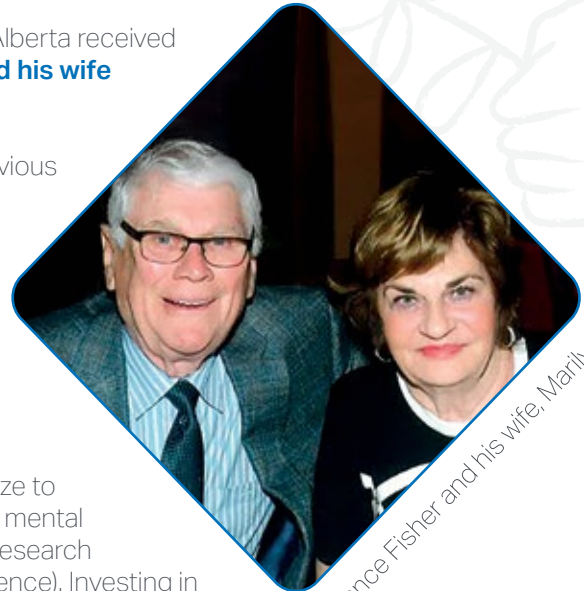
In 2021, the Prostate Cancer Centre (PCC) in Calgary, Alberta received a **\$5 million donation from the late Rance Fisher and his wife Marilyn.**

This impactful gift will enable the PCC to expand its previous initiatives but more importantly explore new frontiers in the arena of men's health.

This generous gift **from the Rance and Marilyn Fisher Family Charitable Foundation** will enable the PCC to grow, focusing on two priorities:

- (1) patient care and
- (2) cancer research in men's health.

PCC's growth will include an expansion of its physical size to house; current plus many new patient care services (i.e. mental health and wellness care) and numerous novel cancer research activities (i.e. personalized medicine and artificial intelligence). Investing in these activities, enabled by the Fisher donation, **will allow PCC to more effectively deliver on its 'bench to bedside' service model while improving men's health.**



Rance Fisher and his wife, Marilyn

About the Rance & Marilyn Fisher Family Charitable Foundation

The Rance and Marilyn Fisher Family Charitable Foundation, is a Calgary-based organization established in 2021 to further Rance Fisher's personal philosophy of giving back and to ensure the Fisher family's legacy of support for generations to come. The Foundation has committed support to worthy initiatives in central and southern Alberta with a focus on the health, well-being, and education of children and youth, and mental health initiatives that support people of all ages.



Remembering **RANCE FISHER**

25-Jul-1937 - 12-Mar-2022

It is with great sadness that the family of Rance Fisher announced his passing on March 12, 2022.

Rance was the quintessential Albertan. Born on July 25, 1937 and raised on a farm near Lacombe, he grew up in poverty and, at a young age, set his sights on a better life. A natural entrepreneur with strong vision and a willingness to embrace risk, Rance not only created and led several successful businesses, but along the way he lived a life of impact.

Rance was an exemplary member of the Calgary community. A pioneer in the oil and gas industry in Alberta, Rance was a member of the Canadian Petroleum Hall of Fame.

In 2021, Rance created a family charitable foundation to further his personal philosophy of giving back and to ensure the Fisher family's legacy of support for generations to come. In its first year, the Foundation made transformational gifts to the Prostate Cancer Centre, Calgary Women's Emergency Shelter, the Alberta Children's Hospital, and the Calgary Food Bank.

Rance's own personal experience with services provided by the PCC as guided by Dr. Eric Hyndman, a member of the Board of Directors at the PCC, was the major impetus underlying the current gift. Rance hoped that fellow men and their families in need of PCC services will receive comprehensive and cutting edge care in a 'state of the art' facility close to home.





Prostate Cancer
Centre

DATE: OCT. 07. 2021

RECEIVED FROM:

RANCE & MARILYN FISHER

\$ 5,000,000.00

THE SUM OF:

FIVE MILLION

x/100 DOLLARS



www.prostatecancercentre.ca

Together we are
making a difference
Thank You!



The **AGAT FOUNDATION** and **KEEP IT IN ALBERTA** campaign

THANK YOU EVERYONE
for helping us
Keep it in Alberta,
together along with the
AGAT Foundation
we raised a
RECORD-BREAKING
\$700,000
in November towards
local men's health.



Marissa Reckmann, CEO of AGAT Laboratories presenting Dr. Eric Hyndman, Section Chief of Urology and medical member of the PCC Board of Directors and Amanda Boxter, COO of the PCC with the \$350,000 matching donation from the AGAT Foundation.

We feel **incredibly humbled** by our community's **generosity** and **support**.

AGAT Labs
Foundation 



About the AGAT FOUNDATION

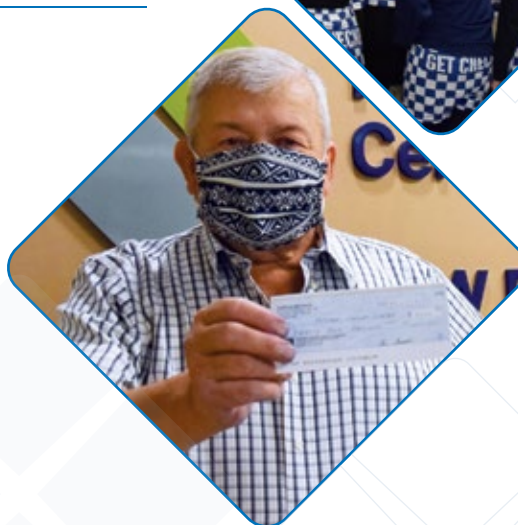


The AGAT Foundation **serves and operates in communities throughout Canada** seeking out areas of general interest in the hopes of raising awareness and bridging science and innovation with technology development and humanitarian considerations.

BOXERS DAY

A huge thank you to **Don Bayrack** who dropped off a **\$25,000 donation** towards our **Keep It In Alberta** matching program on our **Boxers Day**. Don came to the PCC to share his donation and participate in wearing our **"Get Checked" boxers** to spread awareness about the importance of getting a baseline PSA test.

THANK YOU DON BAYRACK \$25,000



Special **THANK YOU**

THANK YOU
NILS BODTKER
\$35,862



Nils Bodtker

Special thank you to **Nils Bodtker** who generously **donated the remaining \$35,862** towards our **Keep It In Alberta** campaign. Nils was watching the campaign tally on our website and in a heartwarming gesture contacted us to top up AGATs matching donation of up to \$350,000 with the final amount for us to reach our goal!



AGAT Labs
Foundation 



CHARITY TOURNAMENTS

PRIDDIS GREEN Charity Classic

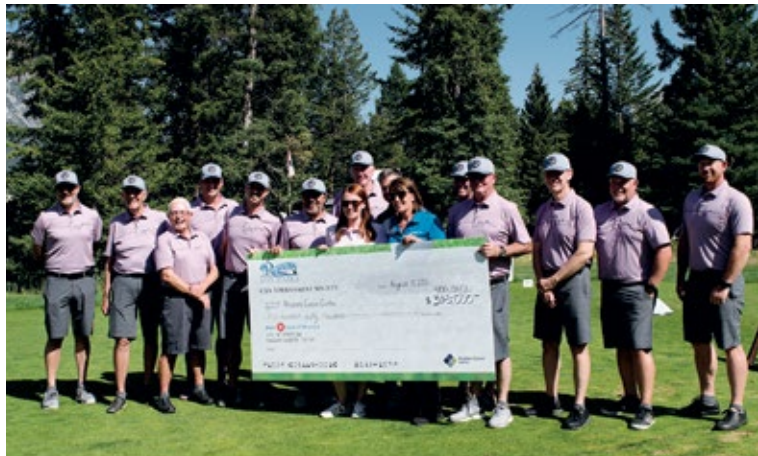
We witnessed incredible support and generosity this year at the **Priddis Greens Charity Classic**! This event is one of the most highly anticipated annual events for the community and our Centre and **this year we raised \$340,000 for PCC**. Thank you so much to the tournament golfers, the Priddis Greens golf members, and all of the committee members for making the **twenty third annual tournament** so successful. We are so grateful!



CHARITY TOURNAMENTS

REMINGTON CHARITY Golf Classic

The 2021 Remington Charity Golf Classic was an amazing day! Thank you to the **incredible committee members and sponsors** who continue to donate their time, talent, and resources to our Centre. The tournament ran like clockwork and raised a grand total of **\$400,000** this year. We could not be more thrilled about the outcome!





DONOR wall

Bronze \$500 to \$4,999 | Individual

- Blair Albers
- Bill Alston
- Garnet & Cindy Amundson
- Peter Andrekson
- Jun & Miyoko Anli
- Michael Aust
- Tej Badhesha
- Kirk Bailey
- Pietro Bellusci
- Tom Bendig
- Larry Bennett
- Jim Bessel
- Victoria Bingeman
- D Cameron Black
- Robert & Phyllis Brinkerhoff
- Gary Brown
- Robert Brownless
- Shelly and Carey Bruce
- James Bryce
- Bruce Burnyeat
- Colin Cantlie
- Blair Case
- Doug Cathro
- Peter Cavanagh
- Wai Chow
- Linda Chynoweth
- Brian & Joanne Clark
- John Clarkson
- Anita Collett
- Rebecca Comley
- Rodger Conner
- Keith Ernest Coulson
- Gerald Coutts
- Gordon Coveney
- Kirby Cox
- Steele Curry
- Bryan Curtis
- Clifford Dawson-North
- Ed de Palezieux
- Raj Dhesi
- John Dushinski
- Ralph Eeson
- Nicolas Eichhorst
- Rocky Mountain Emergency Service
- Dennis Erickson
- William Evanishen
- Kymm Feldman
- Robert Filkohazy
- Courtney Fitzsimonds
- Larry Flaht
- Barry Fleece
- Frank Forte
- Peter Fortune
- Glenn and Veronica Fradette
- Brian Gallen
- Alan Glover
- David Goddard
- Ian Golightly
- Craig Goodall
- Neil and Susan Graham
- Leigh Grant
- Vince Greco
- Warren Greenbank
- Paul Hamilton
- Murray Hanna
- Rick Harden
- Colter Hardy
- Earl Hawkes
- Daniel Heng
- Brian Heninger
- Keith Hesterman
- Ki-Tat Ho
- Denny Hop
- Harry Horn
- Lee Horne
- James Howe
- Guy Hwang
- David Ireland
- Richard Joly
- Les Jordan
- Richard Jordan
- Robert Kennedy
- Trim Kosumi
- Joe Kuzmiski
- Richard Laforest
- Rick Lancaster
- Ming Yiu Albert Law
- Grace Lee
- Ronald Letniak
- Robert Logan
- Greg Loughlin
- Victor Luhowy



Bronze \$500 to \$4,999 | Individual

- Wayne and Donna Lyseng
- Doug Macaulay
- Dave Macfarlane
- Robert Malcolm
- James Manuel
- Brett Maronda
- Don Marshall
- David & Linda Martin
- Ranjana Martin
- Robert Mayes
- Glen McAlister
- J. Alec McDonald
- Doug McIntyre
- Keith Miller
- Mike Miller
- Duke Moreau
- Clayton Mullen
- Roy Nordstrom
- Ronald Nowell
- Peter O'Brien
- A Brian Oliphant
- Joseph Osinski
- Garry Pangracs
- Dante Pascali
- Michael Peacock
- Dino Pedron
- Daniel Pichette
- Danny Pichur
- Cyril Pratt

- Randall Provost
- Douglas Ramsay
- John Reid
- Herb Reynolds
- Lee Rogers
- Chris Rollins
- Joy Romero
- Jacques Roy
- James Rushak
- Rodney Ruttan
- Chat Sangha
- Rod & Wendy Schultz
- Chuck and Ting Seto
- Krishna Sharma
- Monica Sieben-Kuhn
- Raylea Siewert
- Robert Smyth
- Jim Solohub
- Roy Soon
- Joye St Onge
- Robert Steele
- Chris Stephens
- John Stevens
- William Stuart
- Geoffrey Tuvette
- Heather Taylor
- William Tomblin
- Michael Tumback
- Malcolm Turner
- Barry Ullett

- Patricia Van Regen
- William Veres
- Frank Walsh
- Lee Walsh
- Harold Warner
- Daryle Warnke
- Peter Warren
- Scott Weiler
- Ken Wengreniuk
- Steve Williams
- Neil Wittmann
- Michael Woo
- Chris Woodward
- Paul Wright
- John & Lenore Zacharias
- Ron Zinter





DONOR wall

Bronze \$500 to \$4,999 | Corporate

- | | | | |
|--|---|--|---|
| <ul style="list-style-type: none">• Aero Aviation LTD.• Akira and Misae Masuda Fund at Calgary Foundation• Badwi Family Foundation | <ul style="list-style-type: none">• Canada Life• Country Hills Golf Club• Dream Industrial• GBI Inc• Heffring Investment Group Inc. | <ul style="list-style-type: none">• Marie and Fred Kernaghan Family Fund• Prairie Merchant Corporation• Sabrena Inc. | <ul style="list-style-type: none">• W. A. Veterinary Services LTD.• Wawanesa• Bucars RV |
|--|---|--|---|

Bronze \$500 to \$4,999 | Tribute Gifts

- | | | | |
|---|--|--|---|
| <ul style="list-style-type: none">• In Honor of John Corriveau• In Honor of Kara Hawker• In Honor of Kevin Martin• In Honor of Dr. Richard Wassersug• In Honor of Roy Homan | <ul style="list-style-type: none">• In Memory of Cameron Rosa• In Memory of Dennis Moser• In Memory of Ed Kuhn• In Memory of Flores Groeneveld• In Memory of George Zatreparek | <ul style="list-style-type: none">• In Memory of Gord Tovell• In Memory of Henry George Neufeld• In Memory of John (Roly) Thomas• In Memory of Kenneth Lowe• In Memory of Kristen Lee Coutts | <ul style="list-style-type: none">• In Memory of Nick van Regen• In Memory of Orland A. McInnes• In Memory of Ron Bailey• In Memory of Yolanda Loo |
|---|--|--|---|

Silver \$5, 000 to \$24,999 | Individual

- | | | | |
|---|---|---|---|
| <ul style="list-style-type: none">• Peter Aiello• Lee Anderson• Aqueduct Foundation Anderson-Sugimoto Family Foundation | <ul style="list-style-type: none">• Rohan and Nalini Bissoondath• Bill Bowden• Dan Butterwick | <ul style="list-style-type: none">• SAIU Calgary Urology CME Fund• Pat Cashion• Dale Coburn | <ul style="list-style-type: none">• Lesley Cox• Brian Craig• Gail and Kenneth Damberger |
|---|---|---|---|

Silver \$5, 000 to \$24,999 | Individual

- | | | | |
|--|--|---|---|
| <ul style="list-style-type: none"> • Lucille/John Dupuis Corriveau • Jack & Bev Ellefson • Eldon Fraser • William Fric • Glenn Fung • Gilles Gauthier • Tyler Grandan • John Guderyan • Jim Guenter • Julie Hong | <ul style="list-style-type: none"> • Rob Ingram • Donna Johnson • Stuart Kidd • William Lister • Colin and Margaret MacDonald • Lambert Maier • David Martin • Ray and Elly McBeth • Richard McDonald • Michael Pate | <ul style="list-style-type: none"> • David Payce • Rob and Pat Peabody • Przemyslaw Prusinkiewicz • Andy Rajic • Marissa Reckmann • Brydon Rempal • Peter & Jean Saunders • Gregg Scott • Jeff Scott | <ul style="list-style-type: none"> • Donald R Seaman • Rod Sieker • Donald Smith • Kevin Stashin • Lea & Tim Steeves • Richard Von Hagen • Steve Zabawski • David Zaluski |
|--|--|---|---|

Silver \$5, 000 to \$24,999 | Corporate

- | | | | |
|---|--|--|--|
| <ul style="list-style-type: none"> • 1001088 Alberta Inc. • Allan Forrest Sales (1991) Ltd. • ARC Financial Corp. • Breckenridge Group • Brookfield Properties • Brookfield Residential • Canadian Centre for Male Survivors of Child Sexual Abuse(CC4MS) • Carthy Foundation • Coril Holdings Ltd. • Engineered Air - Resman Community Service | <ul style="list-style-type: none"> • Estate of Joan Elizabeth Turnbull • Flynn Canada Ltd • IBI Group • James Blake Nichol Professional Corp. • Jim and Cathy Goertz Family Foundation • Jolera Inc • JWI Investment LP • Lafarge Canada Inc • Lotus Management Ltd • Mayfair & Glamorgan Care Centres | <ul style="list-style-type: none"> • Mawer Investment Mgmt Ltd. • Order of the Eastern Star - Chinook Chapter #133 • Petrin Mechanical (Alberta) Ltd. • PGA Tour Inc. Extra Provincial Corporation • Priddis Member Guest Tournament • Procor Limited • Raymond James Canada Foundation • RBC Foundation | <ul style="list-style-type: none"> • Roger and Lorna Smith Fund at the Calgary Foundation • Rogers Communications • Scotia Capital Inc. • The Catalyst Group • The Philip and Harriet Libin Family Foundation • Trail Appliances • Volker Stevin Canada |
|---|--|--|--|



DONOR wall

Gold \$25, 000 to \$49,999 | Individual

- | | | | |
|------------------------------|---------------------------|---------------------|------------------|
| • Andrew Abbott | • Len and MaryAnne Corney | • Eric Hyndman | • Benedict Polos |
| • Nils Bodtker | • Dr. Bryan Donnelly | • Dapinder Kang | • Peter Sider |
| • Robert and Margot Clerkson | • John Hecht | • Pep and Bev Lough | |
| | | • Joe Pfaefflin | |

Gold \$25, 000 to \$49,999 | Corporate

- | | | | |
|---|---|------------------------------------|--|
| • Bayer Inc. | • David Marchak Fund Through The Calgary Foundation | • Fortis Alberta | • Highfield Investment Group Inc. |
| • Calgary Senior Men's Slo Pitch League 55 Plus | • EFW Radiology | • Gordon Lackenbauer & Jesse Trapp | • Nu Way Floor Fashions - Fred Gifford |
| | | • Shane Homes Limited | |

Platinum \$50, 000 to \$99,999 | Individual

- | | | | |
|-----------------------------|--------------------------|--|--------------------------|
| • Robert and Winnie Bezemer | • Ernie and Leah Hagel | • Patricia & Laurence Murphy | • Eelco Vanderveer |
| • Gordon Coli | • Dick and Lois Haskayne | • Martin & Dianne Nowakowski - Sure Shot Golf Events | • Dennis & Susan Zentner |
| • Murray and Joyce Fox | • Gary Heer | | |

Platinum \$50, 000 to \$99,999 | Corporate

- | | | |
|---|--------------------------------------|--------------------------------|
| • Charles and Grace Thomson Designated Fund at The Calgary Foundation | • Gaponow Family Foundation | • The Bill Beattie Family Fund |
| • Men Made In Calgary | • The Benevity Community Impact Fund | • The Lefebvre Family |
| | | • Village Nutraiser 2021 |

Sustaining Over \$100,000 | Individual

- Donald Bayrack
- Kirk & Dedie Hudson
- Alan and Shelly Norris
- Jay Westman

Sustaining Over \$100,000 | Corporate

- Alberta Cancer Foundation
- Alberta Farmer Express
- Anonymous Donations
- ATB Corporate Financial Services
- Brooks Corp.
- Calgary Flames Foundation
- Calgary Motor Dealers Association
- Cenovus Employee Foundation
- Estate of Henry Neufeld
- Fortis Alberta Man Up Month
- Giftfunds Canada
- Hotel Arts
- Inter Pipeline Ltd.
- Robinson Supply Golf Tournament
- Techworks Solutions
- The Hotchkiss Family Foundation
- United Way of Calgary - Donor Choice Program

Legacy Over \$250,000 | Individual

- Philip and Susan Evans

Legacy Over \$250,000 | Corporate

- #nakedespy - Espy Experience
- Bennett Jones LLP
- Calgary Health Trust
- CMDA Vehicles and Violins Gala
- Keep It In Calgary Campaign
- Prostate Cancer Canada
- Scott Land Stomp
- The Big Ball Gala
- Women for Men's Health

Pinnacle Over \$500,000 | Individual

- Dr. Shelley Spaner
- Clayton and Linda Woitas





DONOR wall

Pinnacle Over \$500, 000 | Corporate

- | | | |
|------------------------|---|---|
| • Bayer CropScience | • Dox Flow Through Fund at The Calgary Foundation | • The Prostate Cancer Fight Foundation – Ride for Dad |
| • KPMG LLP | | |
| • Obsidian Energy Ltd. | | |

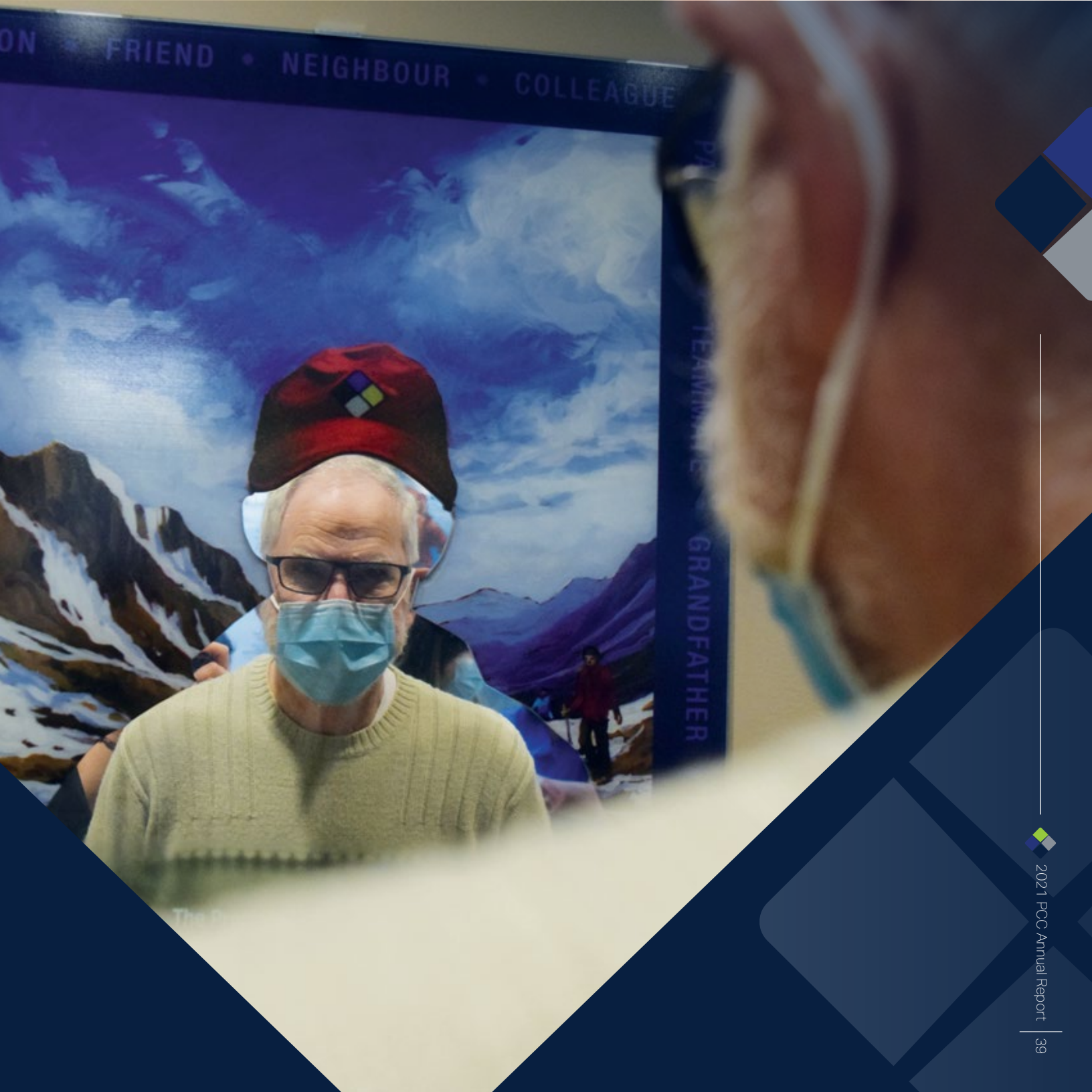
Visionary Over \$1 Million | Individual

- | | | | |
|----------------|------------------------|----------------------------|-------------------|
| • Arthur Davis | • Daryl K (Doc) Seaman | • Michael and Terry Wilson | • W. Brett Wilson |
|----------------|------------------------|----------------------------|-------------------|

Visionary Over \$1 Million | Corporate

- | | | | |
|--|----------------------------------|---|---|
| • AGAT Laboratories | • Birthday Boys 50th Celebration | • Nutrien | • Remington Charity Golf Classic/CYA Tournament |
| • Arthur J.E. Child Foundation | • Calgary Herald/Calgary Sun | • Rance and Marilyn Fisher Family Charitable Foundation | • The Canada Safeway Foundation |
| • Bill Brooks Annual Prostate Cancer Benefit | • Priddis Greens Charity Classic | • The Calgary Foundation | |





2021 FINANCIAL statements

Statement of Financial Position

Year ended December 31, 2021, with comparative information for 2020

	2021	2020
ASSETS		
Current Assets		
Cash and cash equivalents	\$ 9,618,015	\$ 3,459,001
Investments	5,292,122	5,204,221
Accounts receivable	382,325	426,231
Due from related parties	1,609	53,309
Prepaid expenses and deposits	38,998	23,246
Prepaid rent	44,000	44,000
	15,377,069	9,210,008
Property and equipment	1,007,964	1,132,024
Long-term portion of prepaid rent	539,000	583,000
	\$ 16,924,033	\$ 10,925,032
LIABILITIES AND NET ASSETS		
Current Liabilities		
Accounts payable and accrued liabilities	\$ 593,842	\$ 587,901
Due to related parties	8,311	14,290
Government payroll tax payable	34,321	14,663
Deferred cash contributions	4,598,481	4,720,942
	5,234,955	5,337,796
Deferred capital contributions	6,184,658	807,925
Net assets		
Unrestricted	5,504,420	4,779,311
	5,504,420	4,779,311
	\$ 16,924,033	\$ 10,925,032

2021 FINANCIAL statements

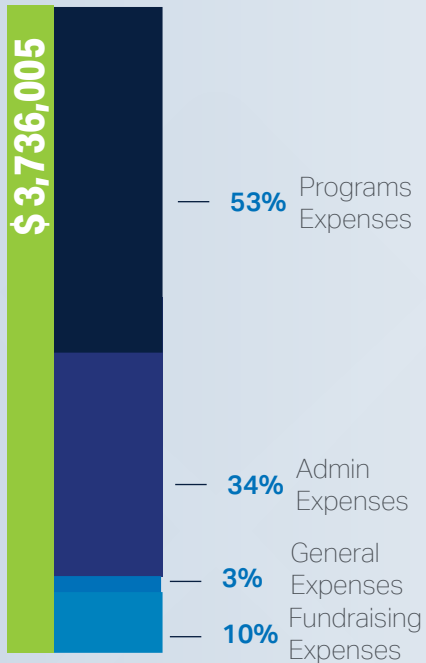
Statement of Operations

Year ended December 31, 2021, with comparative information for 2020

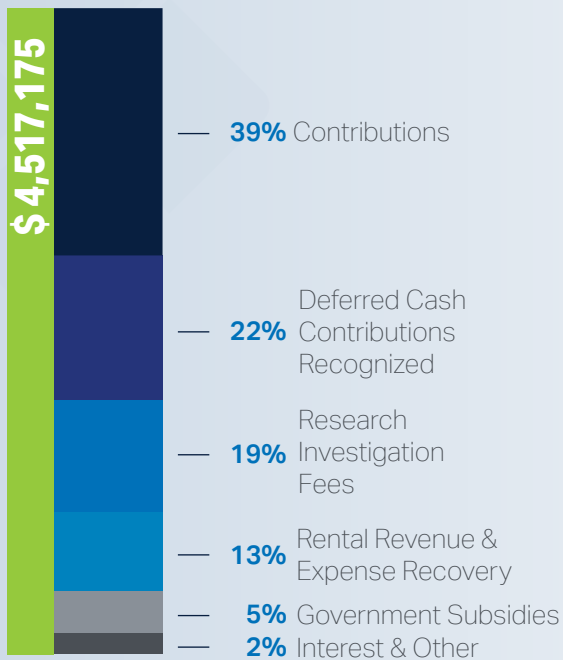
	2021	2020
REVENUES		
Deferred cash contributions recognized	\$ 994,001	\$ 1,096,317
Contributions	1,745,087	1,285,655
Research investigation fees	875,360	923,448
Rental revenue and expense recovery	575,776	562,255
Government subsidies	238,929	258,591
Interest and other	88,022	83,901
	4,517,175	4,210,167
EXPENSES		
Salaries and benefits	2,077,769	2,088,635
Projects and/or programs	616,199	737,867
Contracted services	341,524	308,312
Events and recognition	275,744	210,783
Rent and occupancy	256,045	195,982
Office and other	167,812	191,861
Advertising and marketing	912	766
	3,736,005	3,734,206
Excess of revenues over expenses before other items	781,170	475,961
OTHER ITEMS		
Amortization of deferred capital contributions	73,267	71,116
Amortization of property and equipment	(129,328)	(137,324)
	(56,061)	(66,208)
Excess of revenues over expenses	\$ 725,109	\$ 409,753



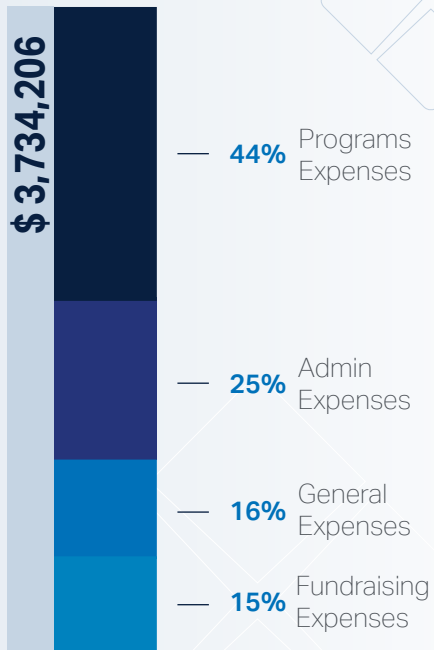
EXPENSES 2021



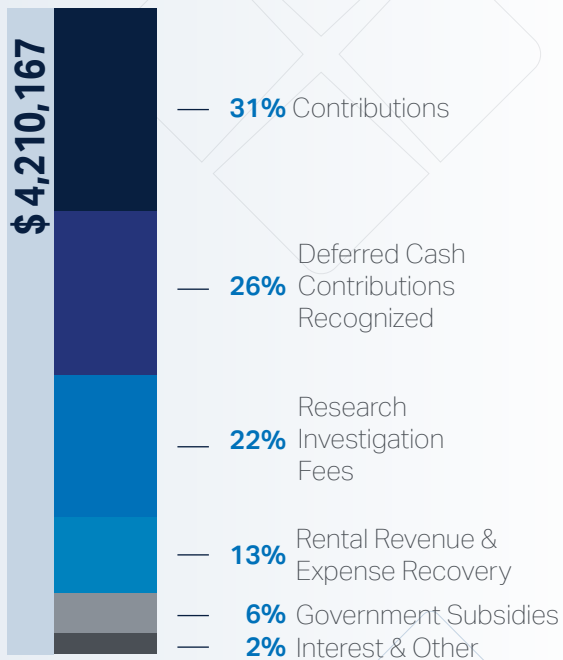
REVENUES 2021



EXPENSES 2020



REVENUES 2020





IN THE FUTURE, we want everyone in our community to be able to say :

"I was diagnosed early"

"I understand my treatment options,
so I can make good decisions"

"I feel part of a community and I'm
inspired to give something back"

"I'm secure in knowing my family will
have a place to go if they need support"

"I get the treatment, care, and
aftercare I need that are best
for my cancer and my life"

"I have local access to the latest in clinical
research when I need it"

"I can enjoy life"



Calgary Prostate Cancer Centre

📍 6500 - 7007 14 street SW
Calgary, AB | T2V 1P9

☎ 403.943.8888

✉ info@prostatecancercentre.ca
Charitable Number: #893376327RR0001

🐦 [prostatealberta](#)
f [prostatecancercentre](#)
📷 [prostatecancercentre](#)

➡ prostatecancercentre.ca